



Power Fender Care & Operation Instructions



The Power Fender™ eliminates the need to climb onto the bow to deploy fenders, significantly reducing the risk of falling or injury while docking! Now you can dock without leaving the cockpit, improving safety and eliminating hassle. The fenders are stored horizontally under the railing, almost invisible, eliminating the need for Fender Baskets.

WARNING

Your boat may pull the fenders with a very significant force that creates tension on the fender line and may cause serious injury, particularly if a body part is wrapped in the line.

Use the Power Fender safely:

Stay clear while docking. Keep yourself and others away from the Power Fender while docking.

Do not touch the Power Fender while in operation. Make sure no one touches or pulls on any part of the Power Fender while it deploys or lifts.

Do not attempt to repair, open, or modify. All repairs must be done by Boat Innovation® only.

Before docking, always verify that the fenders are deployed to the desired height and position/angle.

Do not use in rough weather or high waves.
Do not exceed the product's maximum ratings.

INSTALLATION TOOLS

- A Screwdriver, a Measurement tape, a ½" Wrench, Drill and 12mm Drill bit.
- Only use a large head (P3 or P4) Phillips screwdriver. Do not use an electric screwdriver or any other power tool, as the bolts and nuts are stainless steel and may get welded together.



POWER FENDER SET CONTENT:

- 2 Power Fenders
- 12 bolts and 12 nuts
- 6 clamps
- Inside the envelope: 6 rubber strips and 16 bolt covers
- Documentation
- Spacer kit

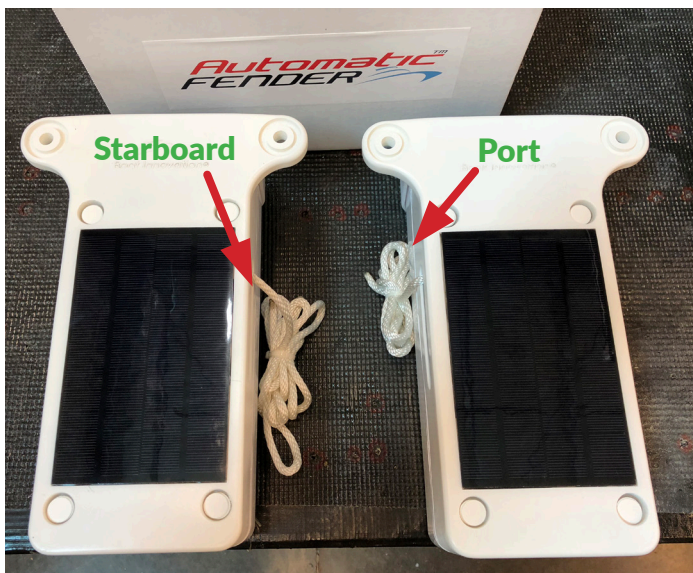


Please contact us with any questions that you may have at:
support@BoatInnovation.com or +1-925-418-2448.

Please add support@BoatInnovation.com to your contacts.

IDENTIFY THE PORT VS STARBOARD POWER FENDER

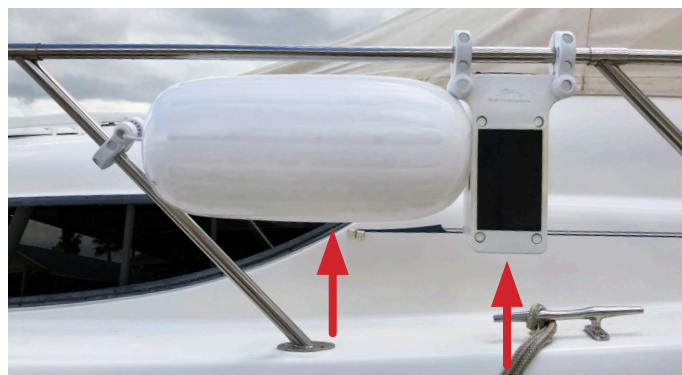
The set product box includes two Power Fenders, one for the Port and one for the Starboard side. When looking at the product front (large solar panel), the Port Power Fender has the line exiting from the left side.



On the bottom of each Power Fender you can find a label specifying port vs starboard.

PORT SIDE INSTALLATION

Start with the Port Power Fender installation. The Power Fender should always be installed to the right of the fender towards the stern:



SPACER INSTALLATION (OPTIONAL)

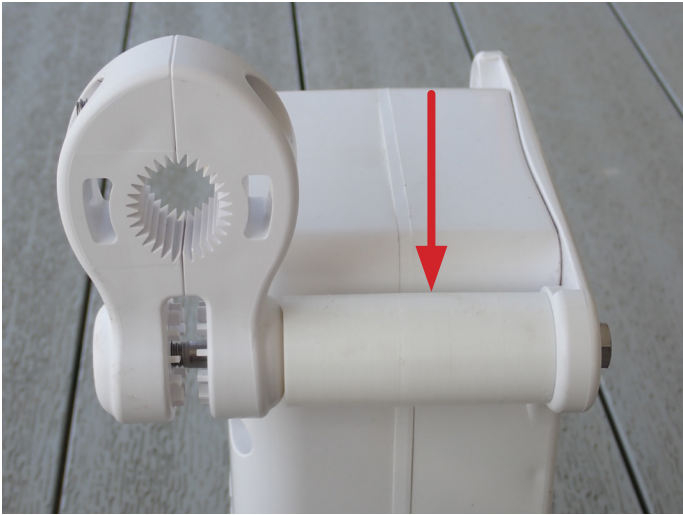
In most cruisers the railing is only slightly recessed relative to the Rub rail:



But in some cruisers the railing is significantly recessed relative to the Rub rail:



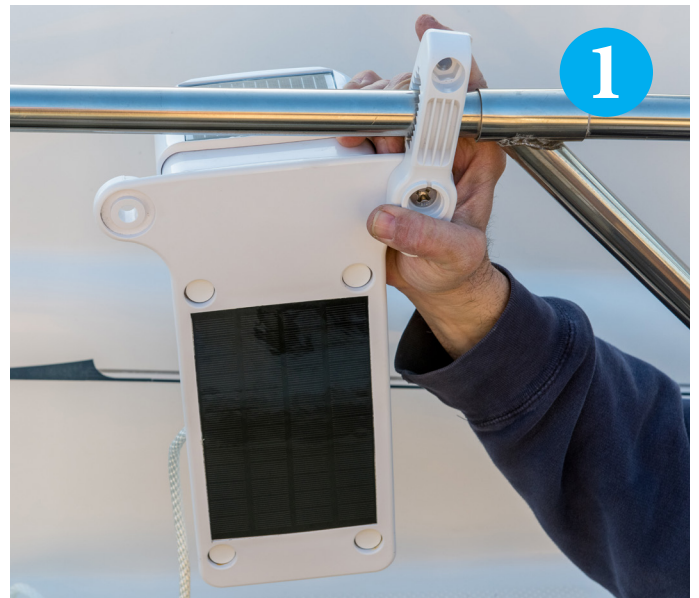
If your cruisers railing is recessed more than 4" relative to the Rub rail, please add the provided spacer. The spacer allows installation closer to the rub rail by extending the Power Fender out from the railing. Add the spacer between the Power Fender and the clamp:



If the clamps are too wide, add the rubber strip provided:

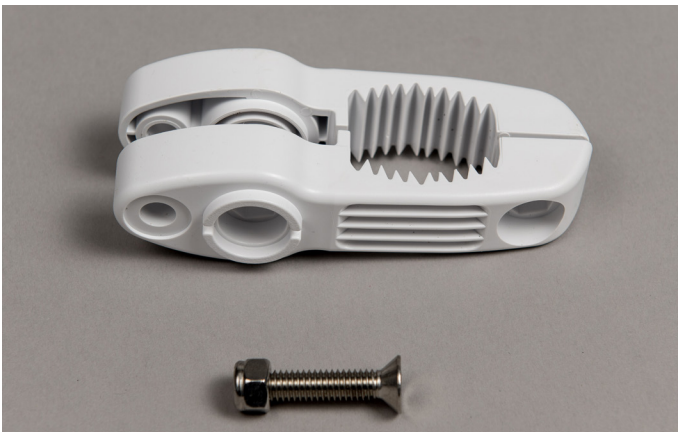


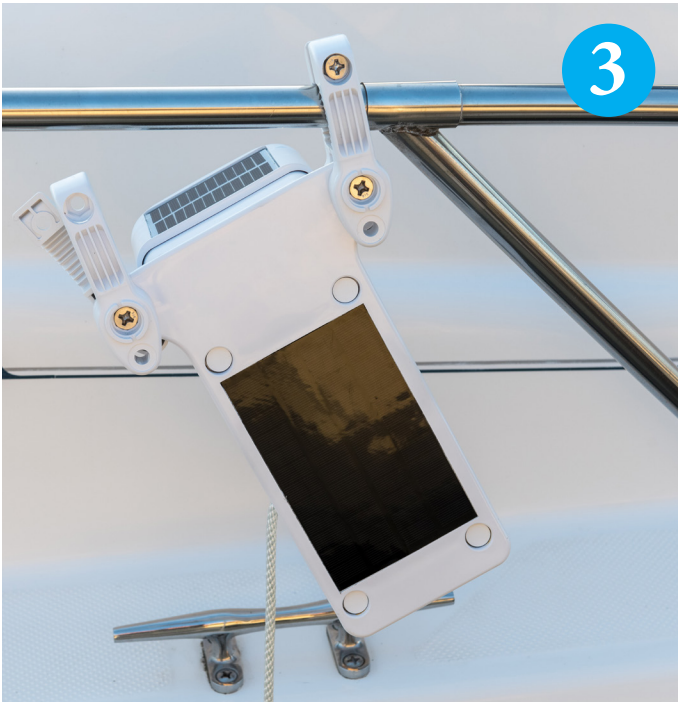
Install the Power Fender in front of the stanchion (to the left of the stanchion). Lightly tighten the bolts to allow clamp movement along the railing during the installation:



We will continue the installation assuming a spacer is not required. In case a spacer is required, please add it at each of the following steps.

Connect a clamp to the Power Fender using a single bolt and a single nut. **Lightly** tighten the bolt:





If the boat has a lifeline, it should be placed under or behind the Power Fender. Make sure the lifeline doesn't interfere with the fender's movement. The lifeline should not be too tight, as when temperatures drop it will get tighter and may damage the Power Fender's enclosure.

Always make sure that the nuts are inserted properly into the Power Fender's part.

Proper nut placement:



Note: The nut lock is to the outside. The nut is fully inserted into the plastic groove.

Wrong placement:

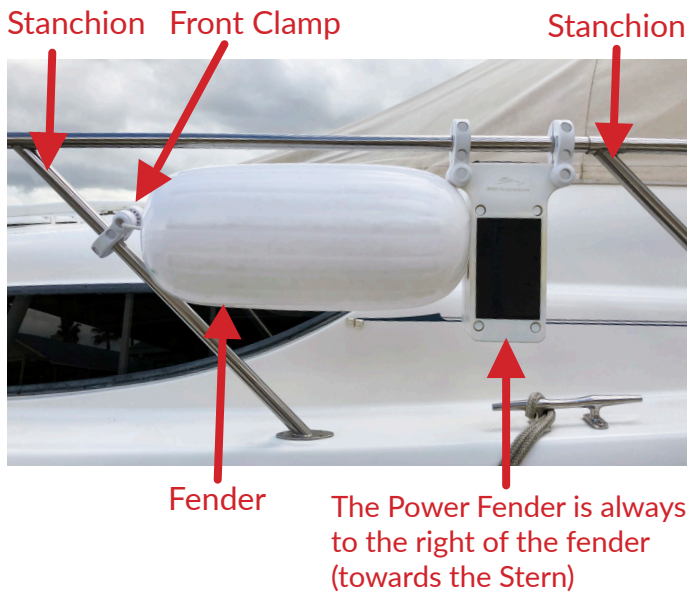


Nut is not fully inserted.



FRONT CLAMP INSTALLATION

Install the front clamp about 7" below the railing. Do not tighten the bolts. Accurate positioning is NOT important at this stage; positioning will be adjusted later. Add bolts to the left and middle holes only.



Remove the rubber band from the Power Fender line and run it through the fender's center hole:



Insert the line from the outside towards the boat, through the front clamp's right hole.



Tie a knot on the line that went through the clamp hole:



Pull the line firmly while holding the front clamp, and confirm that the knot doesn't slip out through the clamp hole. The first installation stage is complete:



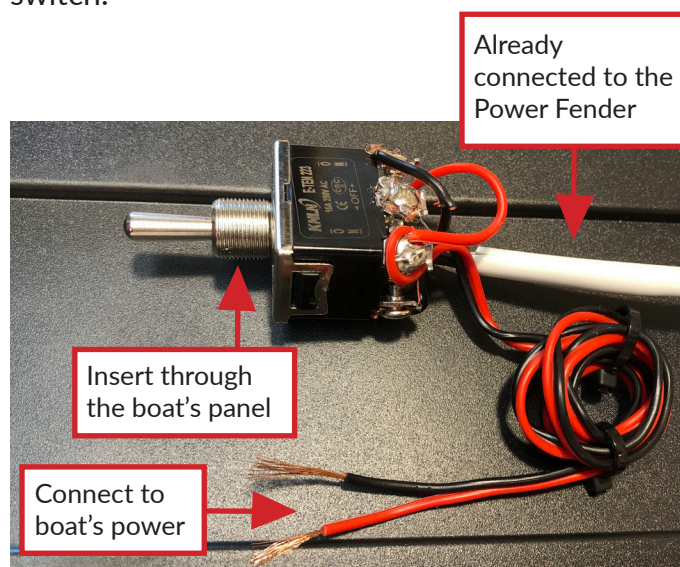
Install all Starboard and Port Power Fenders in the same manner.

TROUBLESHOOTING

In case of a problem or a special installation, please refer to troubleshooting at: www.automaticfender.com/support
Or call us: + 1 (925) 418 2448.

SWITCH INSTALLATION

Identify a location with no components or wires on the front or back of the panel. Drill a 12mm hole on the boat's panel and install the 3-way switch.



Place the Port switch to the left and the Starboard switch to the right. Connect the power lines to the boat's 12V power only after installing all Port and Starboard Power Fenders and all the fenders on the boat by following all installation steps. Connecting the switch to power before fully installing all Power Fenders may tangle the line and cause a malfunction.

A convenient 12V power connection can be the cigarette lighter's back.



Optional connection is using a cigarette lighter adapter (not provided).



Add the switch text panels and caps:



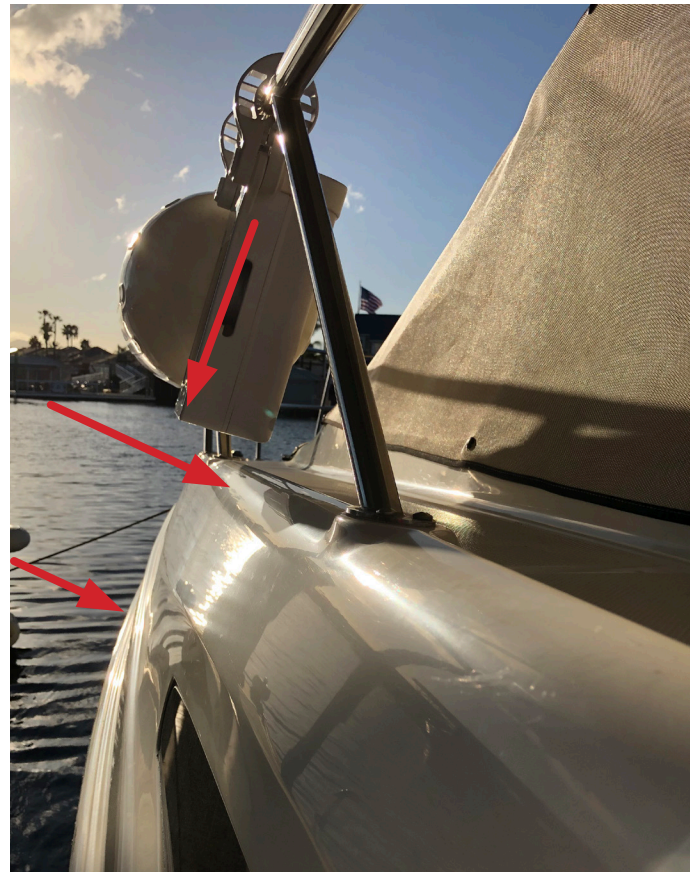
Lift the fender to the rail level by pressing the switch up. Release the switch immediately when the fender reaches the railing. If the fender goes down while pressing the switch up, rotate the switch 180°.

Please note that the line has to come from the upper side of the pulley.



If the fender doesn't go all the way up to the railing, press the switch down for about 2 seconds and up again. You can always release line by pressing the switch down.

Move the bottom of the Power Fender outwards until they are beyond the bow line. Make sure they are not exceeding the rub rail line:



The top of the front clamp should be facing out at 45°, the line inserted from the outside.



Move the front clamp up or down the Stanchion until the fender is parallel to the railing:

ADJUSTING LINE LENGTH

To support a railing height of up to 9', the Power Fender comes with an 18' line. In most cruisers railing height is about 5.5'.

We will now pull out the extra line through the front clamp. **Shorter line will minimize tangling risk and provide stronger fender pull power!**

1. Press the 3-way switch down and deploy the fender all the way to the water level.

Line pulled through the front clamp:



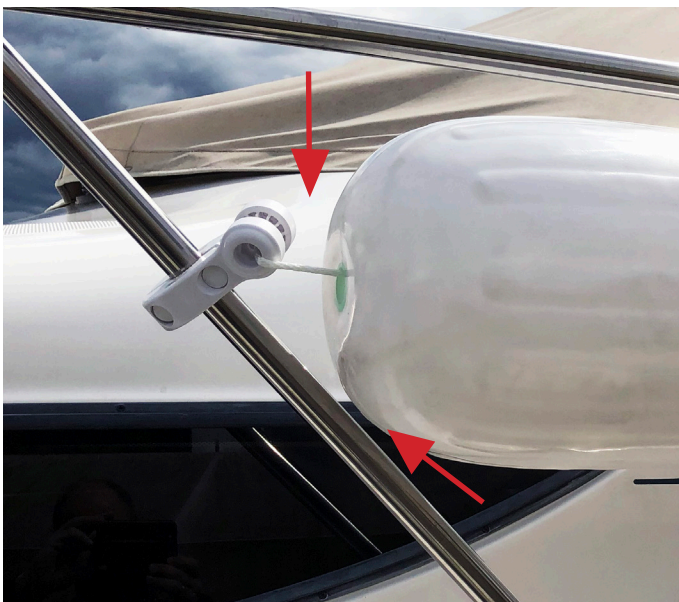
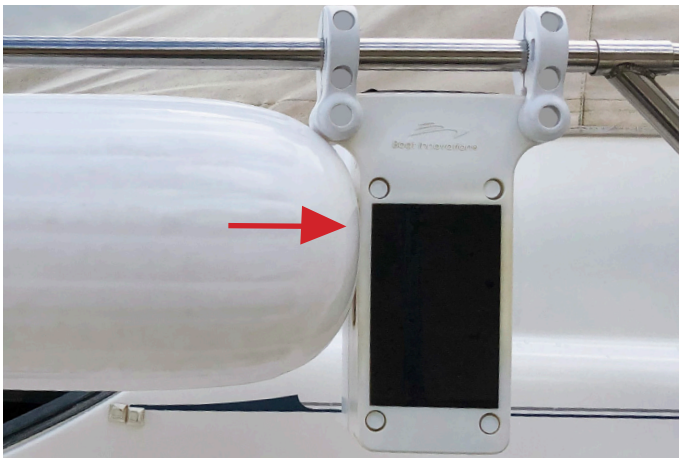
2. Measure your railing height from the water level. For example, if your railing height is 5.5' pull out 6' of line through the front clamp (check following table for your boat's line out). Tie a new knot near the front clamp. Line length to be pulled out:

RAILING HEIGHT (feet)	LINE TO BE LEFT OUT (estimated - feet)
4.5 or lower	8
5	7
5.5	6
6	5
6.5	4
7	3
7.5	2
8	1
8.5 or higher	0

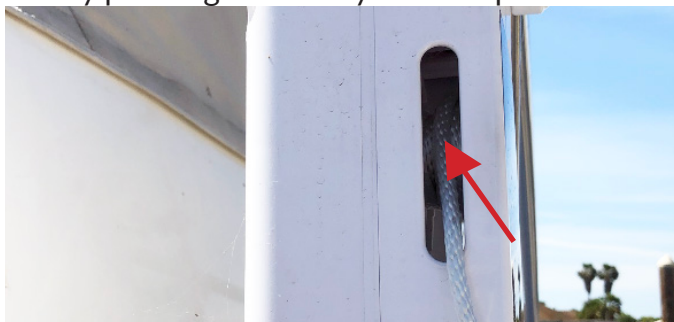
Press the 3-way switch down and deploy the fender all the way to the water level.



While the fender is touching the Power Fender; the distance between the fender to the front clamp and the Stanchion should be 1/2". Move the Power Fender along the railing to achieve the desired location:



3. For the best performance, when the fender is all the way at water level, you should see about 3 wraps on the pulley. Release more or pull back line by pressing the 3-way switch up or down.



Do not disassemble the Power Fender, just look through the side/line opening:



Too much line in the pulley, pull some more line through the front clamp.



Correct



Not enough line

4. Wrap the extra line around the Stanchion and secure it:



Repeat these steps for each installed Power Fender.

ENJOYING THE POWER FENDERS

Before docking always confirm that the fenders were deployed to the correct height, adjust line length if needed.

It is always best to deploy the fenders in calm waters (when getting inside the marina). Fenders deployed too early in choppy waters may change to a horizontal angle:

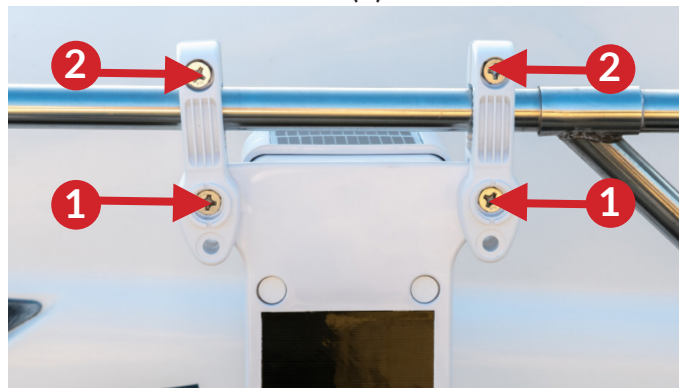


You can always change them back to vertical deployment by lifting and deploying again. If docked in choppy water, hang your manual bow fenders and lift the Power Fenders to rail level. While docked, hanging the manual fenders is usually easily done from the dock.

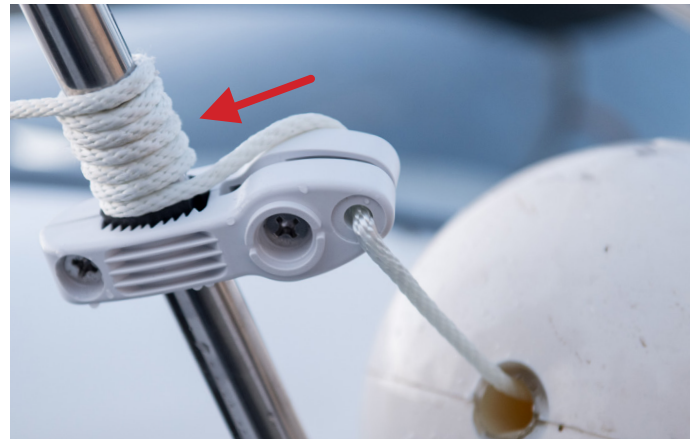
If the fender doesn't go all the way up to the railing, press the switch down for about 2 seconds and up again. You can always release line by pressing the switch down.

TIGHTEN THE BOLTS

Add all remaining bolts to all clamps. Tighten all lower Power Fender bolts (1).



After tightening all lower bolts, tighten all other bolts in all clamps (2&3).



CARE AND MAINTENANCE

BOLT COVERS & FRONT CLAMP LINE

Install the bolt covers (optional) only after your first cruise using the Power Fenders, and after one last bolt tightening.



Cut out the extra line wrapped on the Stanchion:

To keep the Power Fender white and shiny for years to come, polish and wax all white Power Fender surfaces. Use marine boating approved polishing and waxing products. If the boat is docked normally in a covered area, waxing and polishing every other year is sufficient. If the boat is not normally docked in a covered area, waxing and polishing should be done twice a year. The solar cells should not be polished or waxed, please keep them clean using only a cloth and water.

POWER FENDER LIMITED WARRANTY

Warranty

Arditi Holdings LLC (DBA Boat Innovation) ("Company") warrants that any defects in materials and workmanship in a properly installed and used Power Fender™ ("Product") will be corrected by the Company for a period of 1 year. The beginning of the foregoing period shall be the date of the first retail purchase of the Product. This warranty does not cover damage caused by improper use, improper care, accidents, natural breakdown of materials over time and use, or delivery cost.

A Product for which a warranty claim is being made should be returned to the Company for a warranty coverage evaluation. If the Company determines that the Product is covered under this limited warranty, then the Company will repair the Product with new or refurbished parts, or replace the Product with the same Product or an equivalent Product. Such repairs or replacements will be your sole remedy under this limited warranty.

The Warranty Does Not Apply To:

1. Any failure resulting from lack of maintenance.
2. Normal wear and tear.
3. Misuse or damage.
4. A Product which has been altered, changed, or repaired by anyone other than the Company.

This limited warranty is the only warranty applicable to the Product, and is in lieu of all other warranties.

Limitations

IT IS YOUR SOLE RESPONSIBILITY TO INSTALL AND USE THE PRODUCT IN A MANNER THAT WILL NOT CAUSE ACCIDENTS, PERSONAL INJURY OR PROPERTY DAMAGE. YOU ARE SOLELY RESPONSIBLE FOR OBSERVING SAFE BOATING PRACTICES. YOUR USE OF, OR INABILITY TO USE, THE PRODUCT IS AT YOUR SOLE RISK. THE COMPANY DOES NOT ASSUME ANY LIABILITY, AND SHALL NOT BE RESPONSIBLE FOR, ANY DAMAGE INCURRED BY USING THE PRODUCT, INCLUDING ANY PERSONAL INJURY INCURRED AS A RESULT OF USING THE PRODUCT. EXCEPT AS EXPRESSLY STATED ABOVE, THE PRODUCT IS PROVIDED FOR YOUR USE ONLY WITHOUT WARRANTY OF ANY KIND, EITHER EXPRESS OR IMPLIED, INCLUDING IMPLIED WARRANTIES OF MERCHANTABILITY, FITNESS FOR A PARTICULAR PURPOSE, TITLE, AND NONINFRINGEMENT. SOME JURISDICTIONS DO NOT ALLOW THE LIMITATION OF LIABILITY FOR PERSONAL INJURY, OR OF INCIDENTAL OR CONSEQUENTIAL DAMAGES. USE OF THE PRODUCT IS NOT ALLOWED IN SUCH JURISDICTIONS.

TO THE EXTENT NOT PROHIBITED BY LAW, IN NO CASE SHALL THE COMPANY, ITS MEMBERS, MANAGERS, DIRECTORS, OFFICERS, EMPLOYEES, AFFILIATES, AGENTS, CONTRACTORS, OR LICENSORS BE LIABLE FOR ANY DIRECT, INDIRECT, INCIDENTAL, PUNITIVE, SPECIAL, OR CONSEQUENTIAL DAMAGES ARISING FROM YOUR USE OF THE PRODUCT OR FOR ANY OTHER CLAIM RELATED IN ANY WAY TO YOUR USE OF THE PRODUCT, INCLUDING, BUT NOT LIMITED TO, PERSONAL INJURY, OR ANY LOSS OR DAMAGE OF ANY KIND INCURRED AS A RESULT OF THE USE OF THE PRODUCT, EVEN IF ADVISED OF THE POSSIBILITY OF SUCH LOSS OR DAMAGE. SOME COUNTRIES, STATES OR JURISDICTIONS DO NOT ALLOW THE EXCLUSION OR THE LIMITATION OF LIABILITY FOR PERSONAL INJURY OR CONSEQUENTIAL OR INCIDENTAL DAMAGES, AND THE USE OF THE PRODUCT IS NOT ALLOWED IN SUCH JURISDICTIONS.

IN NO EVENT SHALL THE COMPANY'S TOTAL LIABILITY TO YOU FOR ALL DAMAGES EXCEED THE AMOUNT OF FIFTY UNITED STATES DOLLARS (\$50.00). THE FOREGOING LIMITATIONS WILL APPLY EVEN IF THE ABOVE STATED REMEDY FAILS OF ITS ESSENTIAL PURPOSE.

EXCEPT AS OTHERWISE EXPRESSLY PROVIDED IN THIS LIMITED WARRANTY, COMPANY DOES NOT REPRESENT OR GUARANTEE THAT THE PRODUCT WILL BE FREE FROM DEFECT.

Care and Operation Instructions

Follow the Power Fender Care and Operation Instructions dated 09.2020 or newer. It contains important information about personal safety and property damage.





We love seeing our product on Yachts!

Please e-mail us pictures with Power Fender on your boat and post your positive product review to our FaceBook page, under reviews! We will repost it on our Social Media, website and will provide you with an additional one year Product Warranty for FREE!!!



©2021 Arditi Holdings LLC DBA Boat Innovation



Updated on April 29, 2021 3:45 PM

*Thank
You!*

Thank you for your
Power Fender purchase!

To help your friends and family with their
safe boating adventures, we give an
exclusive \$25 discount on their Power
Fender set purchase!

They can use this promo code
at checkout: ThankYou